

# ACCELERATION OF ELECTRIFICATION PROGRAM IN KENYA

Presentation by  
Eng. Nicholas Bundotich, MIEK, PE  
Projects Engineer- Last Mile Electrification Program

**KENYA POWER AND LIGHTING CO. LTD**



**Kenya Power**

# OUTLINE

- Overview of Energy Sector in Kenya
- Acceleration of Electricity access in Kenya
- Comparison with Selected Countries
- Last Mile Connectivity Program(LMCP)
- Outlook towards Universal Access by 2022



# ELECTRICITY SECTOR IN KENYA

Policy  
REPUBLIC OF KENYA



Ministry of Energy

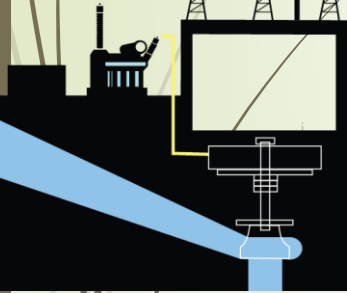
Regulation

ENERGY & PETROLEUM  
REGULATORY AUTHORITY

Formerly,  EPC

## Power Generation

Hydro  
Geothermal  
Thermal  
Wind  
Solar

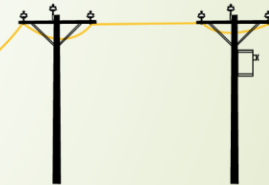


## Transmission



Control  
Sub-station

## Distribution



## Retail



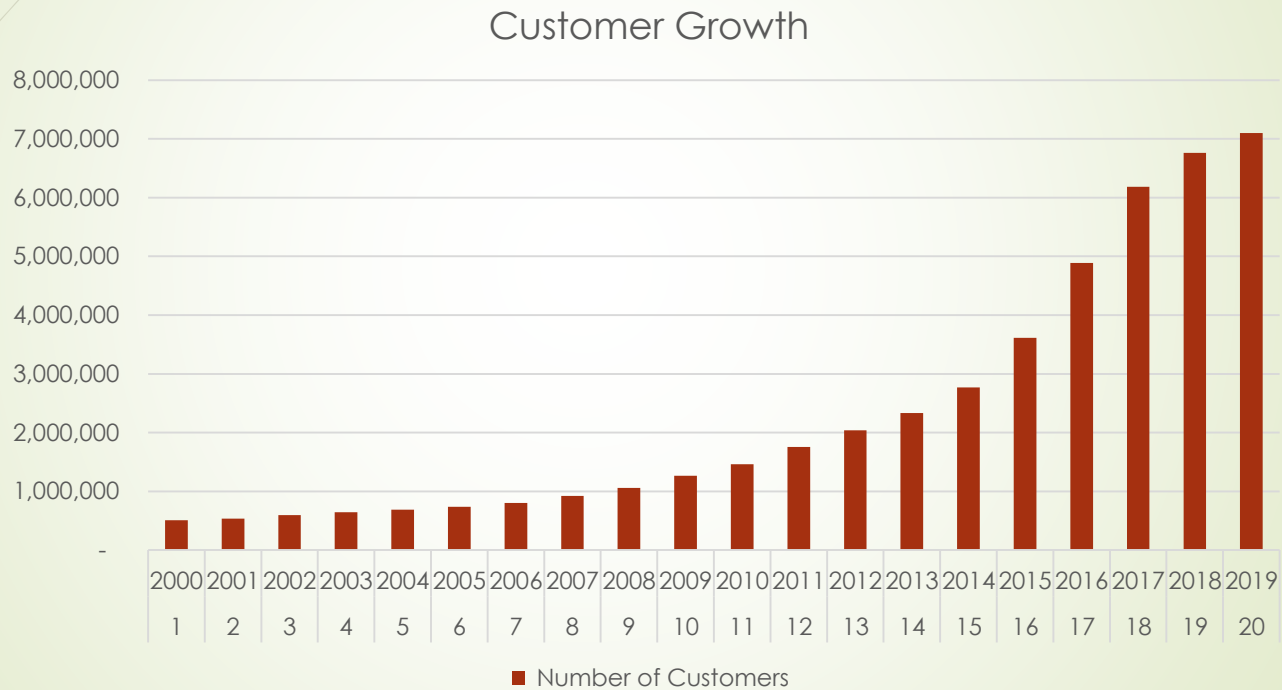
- KenGen
- GDC
- IPPs

- Kenya Power
- KETRACO

- RREC
- Kenya Power

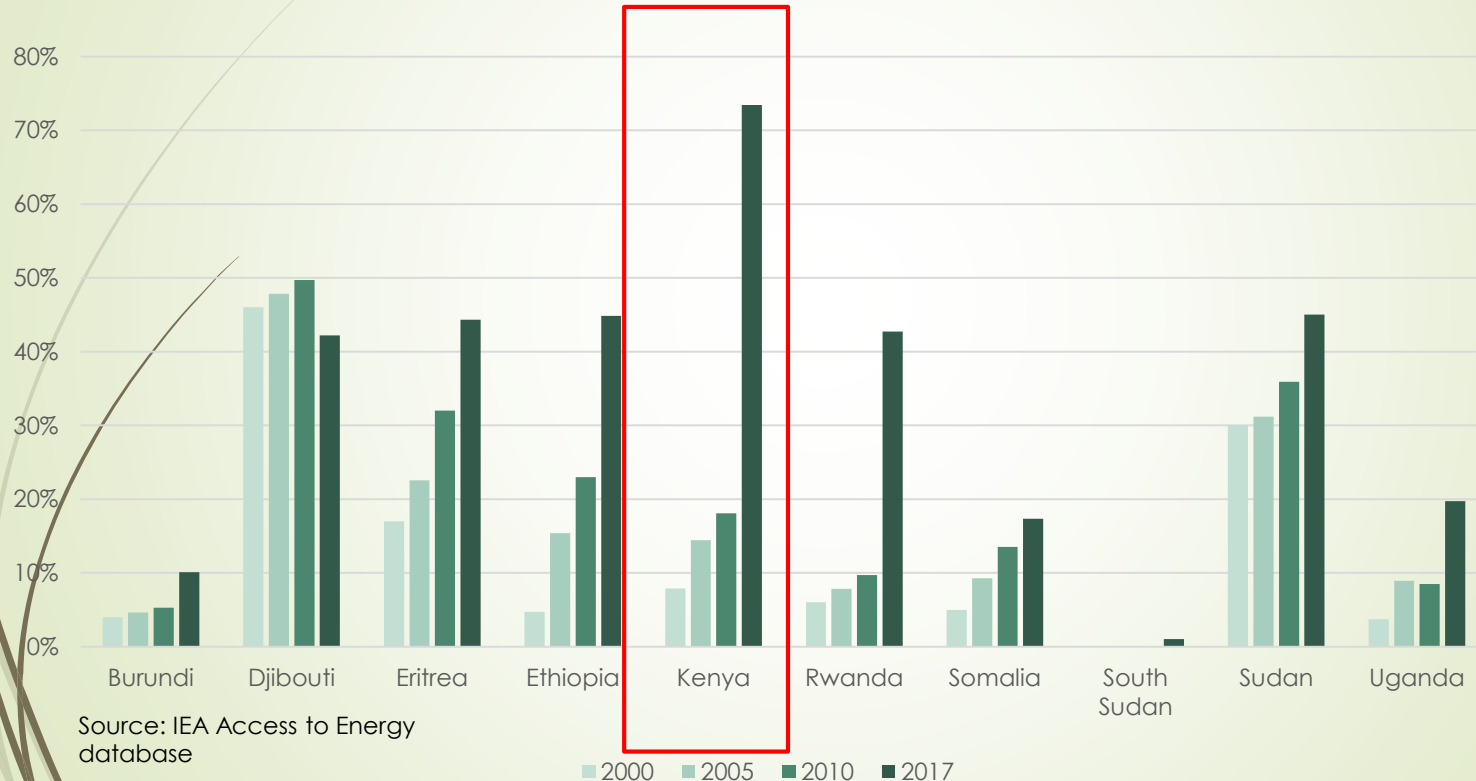
Kenya Power

# Customer Growth



Source: Annual Financial reports

# Electricity Access in Selected Countries: 2000-2017



Source: IEA Access to Energy database



# Initiatives for Acceleration of Electrification

- **Government focus** in universal access of electricity as a driver to economic success. The Government of Kenya (GoK) launched the Kenya National Electrification Strategy (KNES) in November 2018.
- **Last Mile Connectivity Program (LMCP) – Funded by GoK, Donors (World Bank, AfDB, EU, AFD, JICA)**
- REREC's on-going grid extension projects to public utilities/institutions. Mini grids and standalone systems by KPLC/REREC and Private Investors
- Gov't subsidy of connectivity fee from USD 600 to USD 150- with loan facility of upto 36 months

# Last Mile Connectivity Program(LMCP)

- This is a **Government of Kenya** programme that is aimed at facilitating the objective of affordably connecting Kenyan households to the national network grid, It is implemented through:
- **Grid densification** - Installing additional transformers on existing KPLC medium-voltage feeders and laterals to connect housing clusters within 600 meters of existing KPLC distribution transformers
- **Grid intensification** – Extending short (up to 2 kilometres) MV lines and installing additional transformers to connect housing clusters that are beyond the reach of existing transformers and MV lines.



Thank  
You



Kenya Power